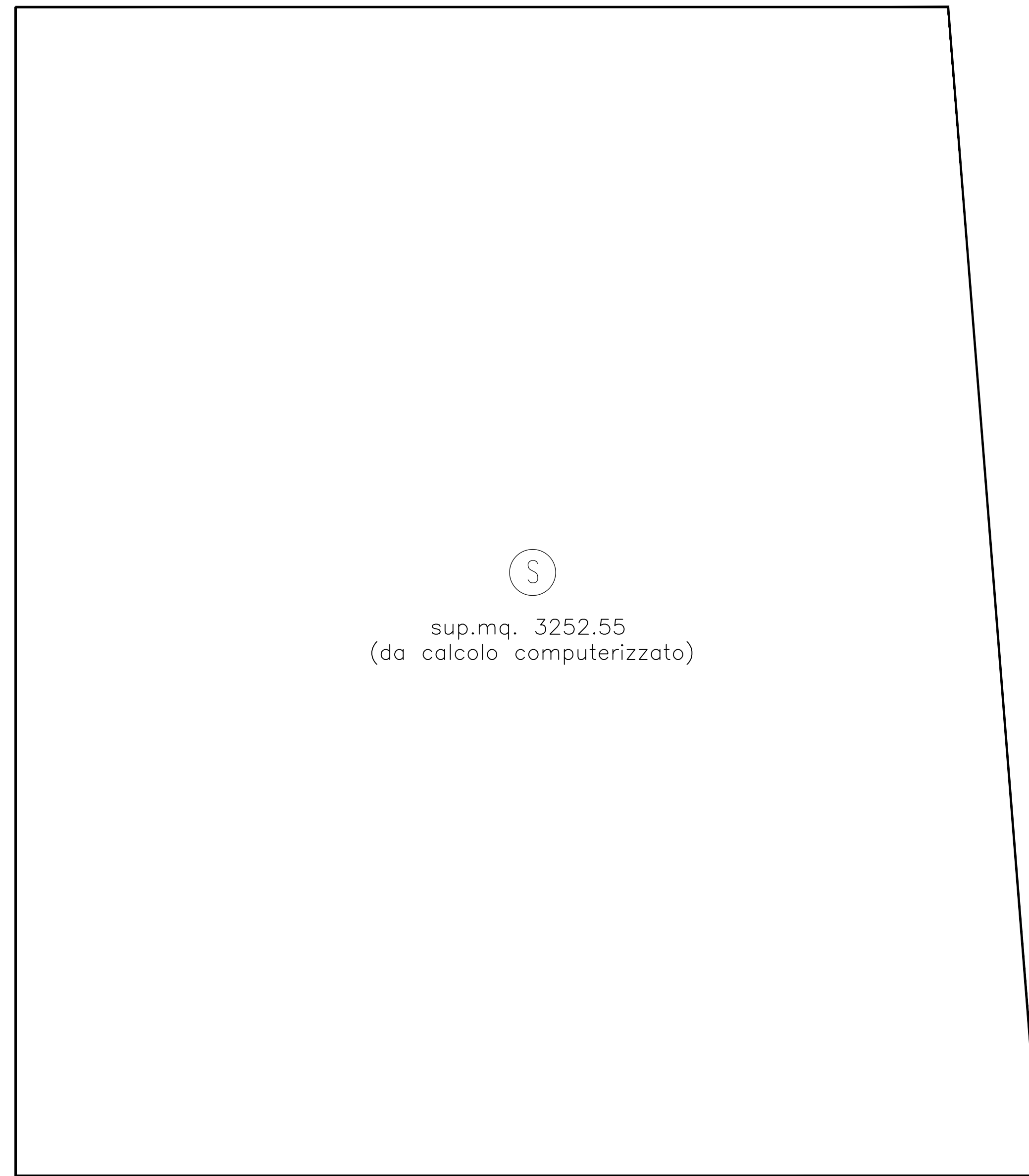


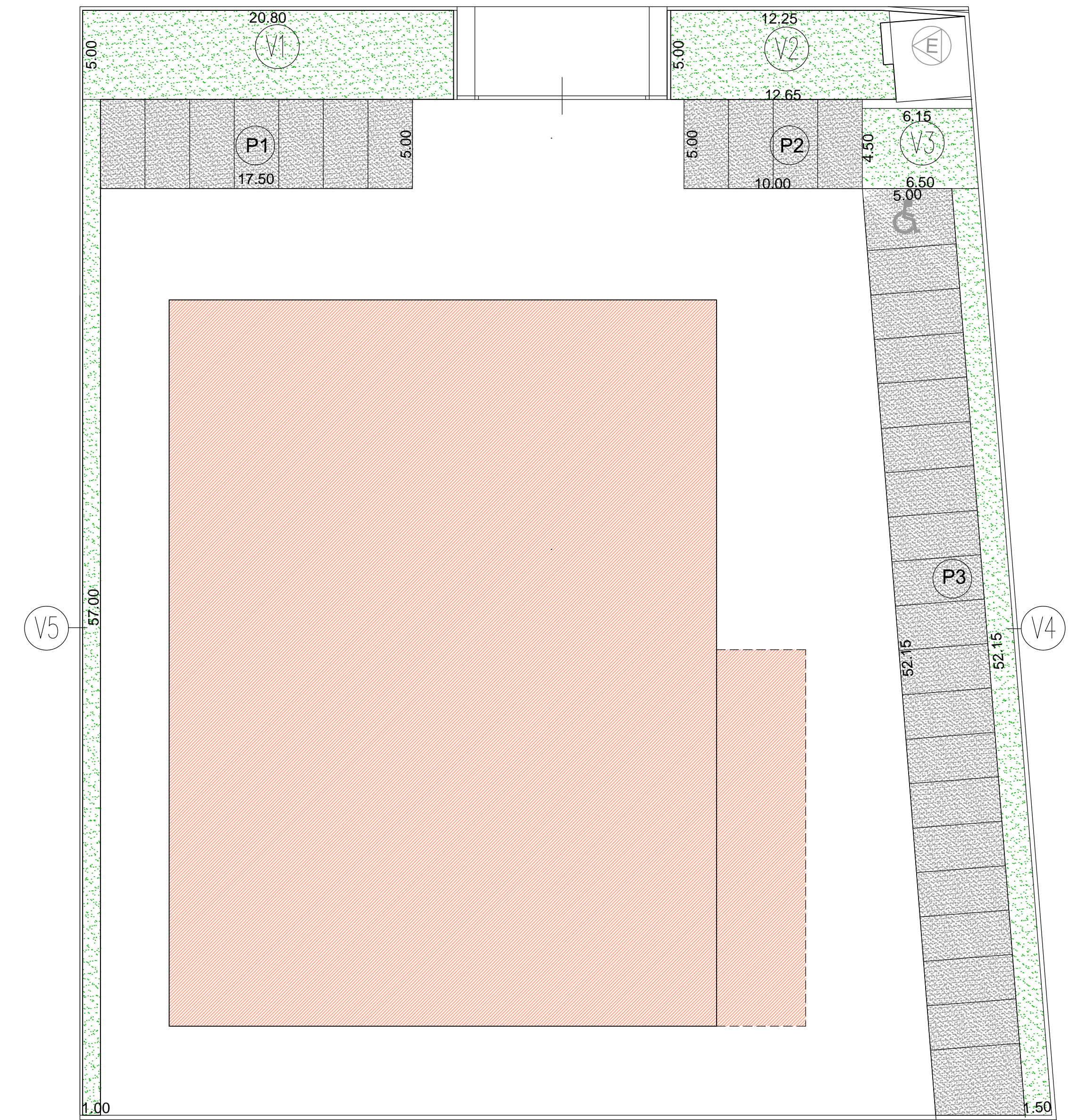
COMUNE : ROVATO		PROVINCIA : BRESCIA
PROGETTO DI REALIZZAZIONE AUTOSALONE		
COMMITTENTE: F.LLI BONAVENTI S.P.A.	TIMBRO-FIRMA	
PROGETTISTA: DOTT. ARCH. MARTINAZZI ALESSANDRA Corso Bonomelli n.41 Rovato (BS)	TIMBRO-FIRMA	TAVOLA: 4
OGGETTO: CALCOLI ANALITICI		SCALA 1:100 Maggio 2018

CALCOLO SUPERFICIE LOTTO



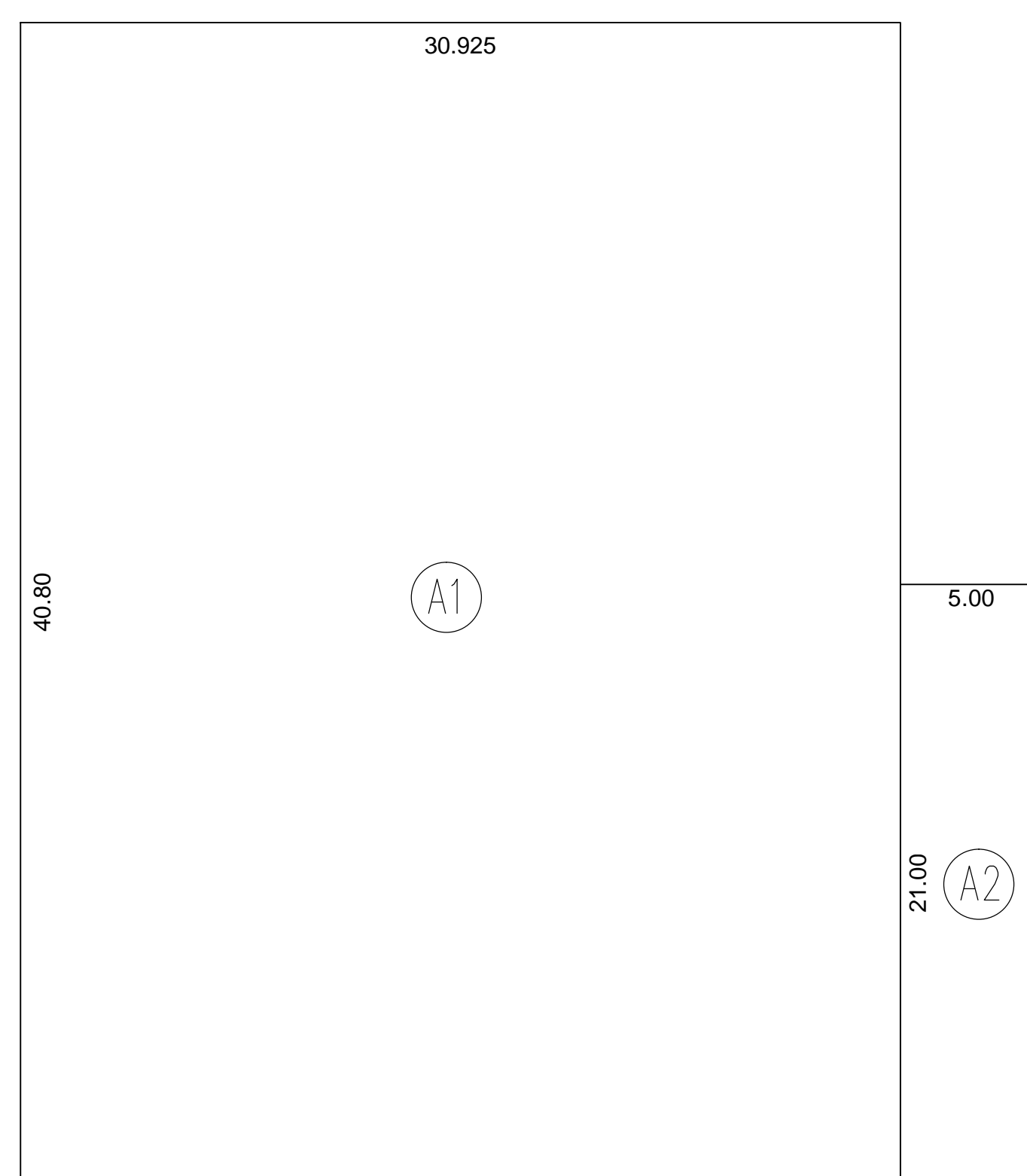
PLANIMETRIA Scala 1:200

SUP. VERDE FILTRANTE-PARCHEGGI PERTINENZIALI



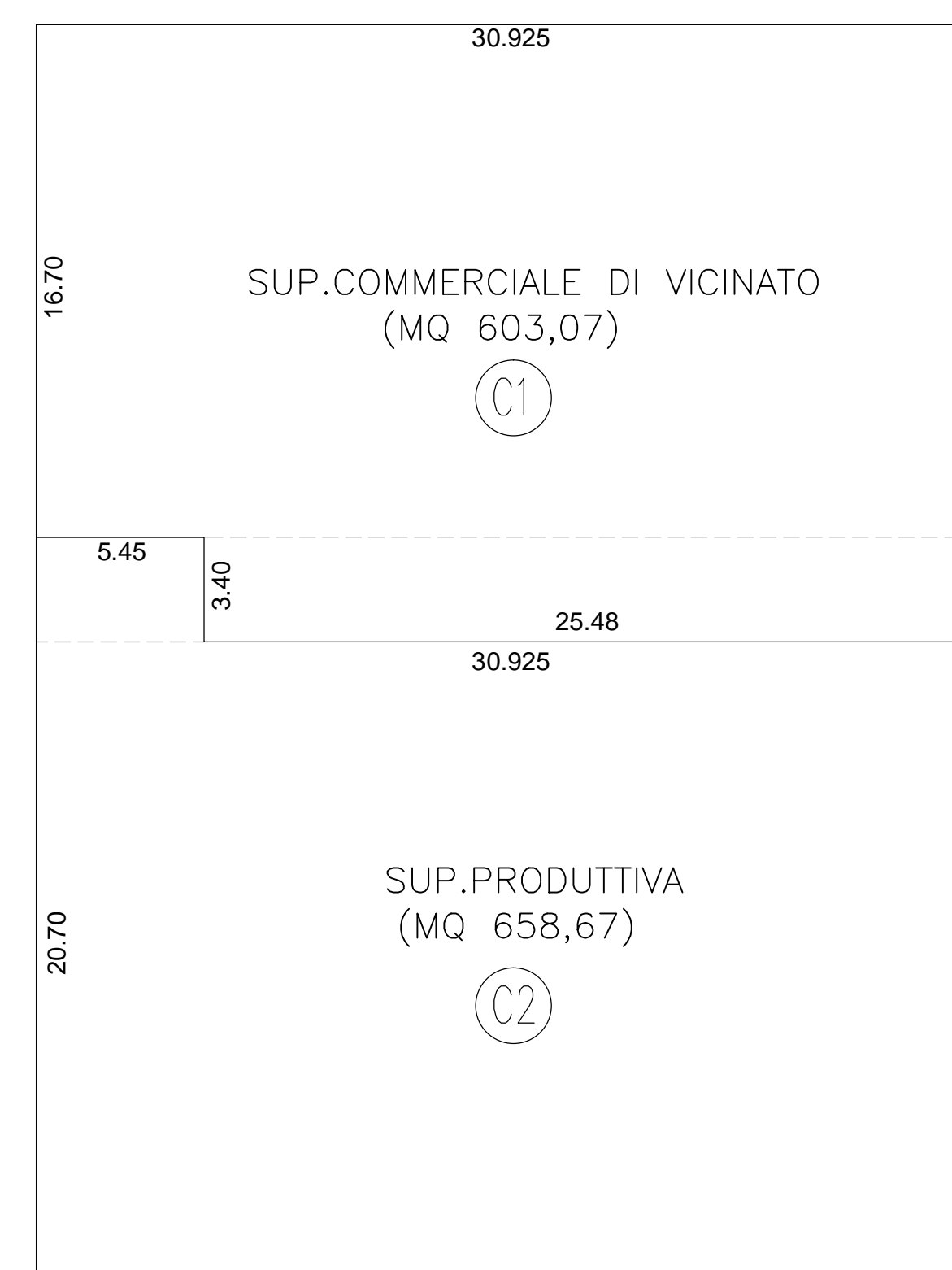
PLANIMETRIA Scala 1:200

CALCOLO SUPERFICIE COPERTA

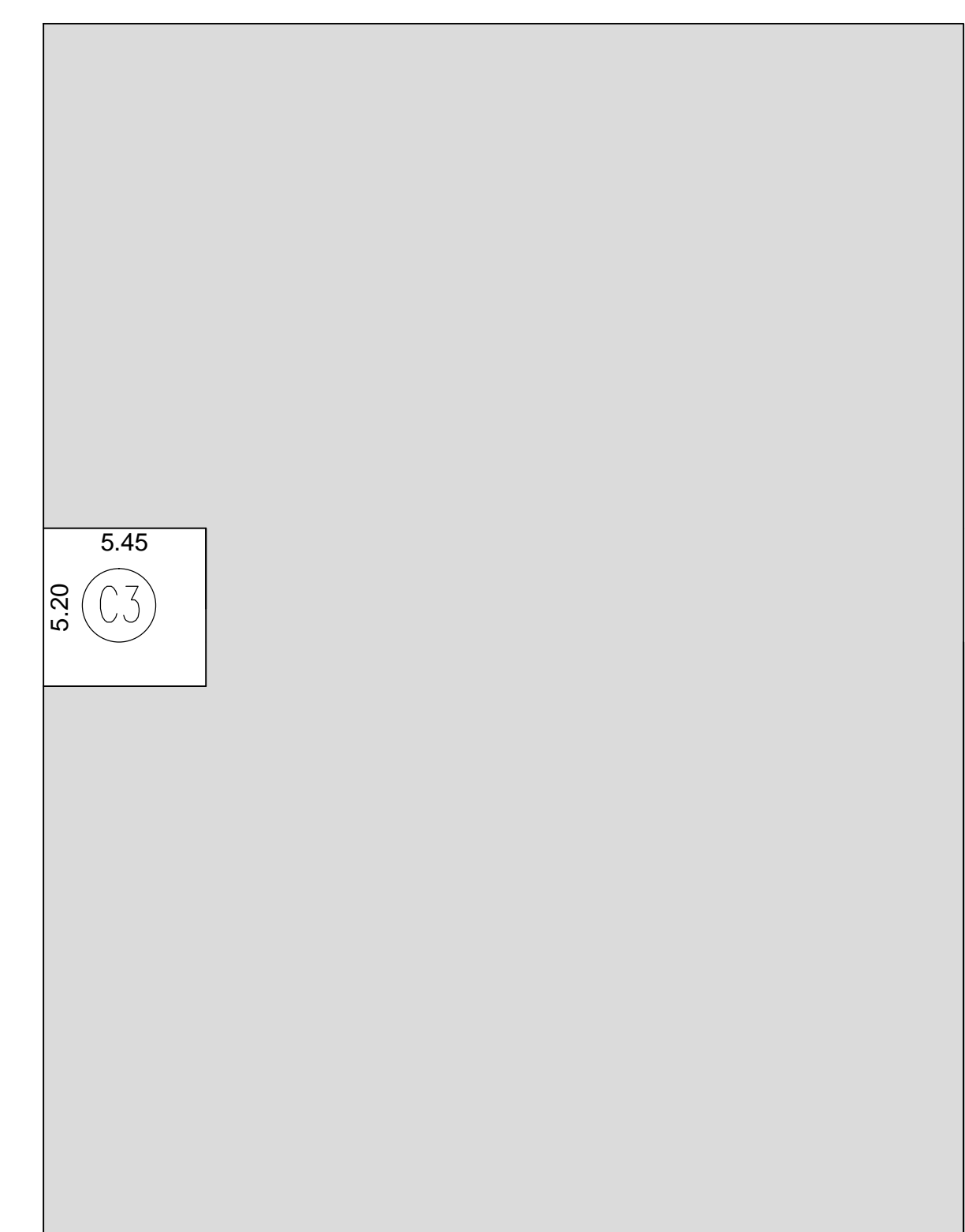


PIANTA PIANO TERRA Scala 1:200

CALCOLO S.L.P.



PIANTA PIANO TERRA Scala 1:200



PIANTA PIANO PRIMO Scala 1:200