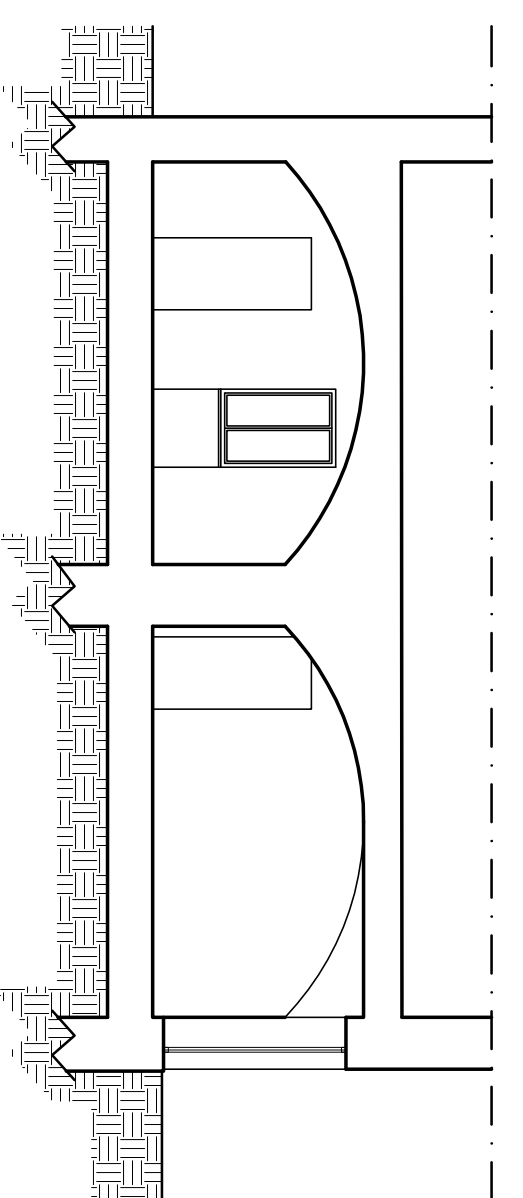
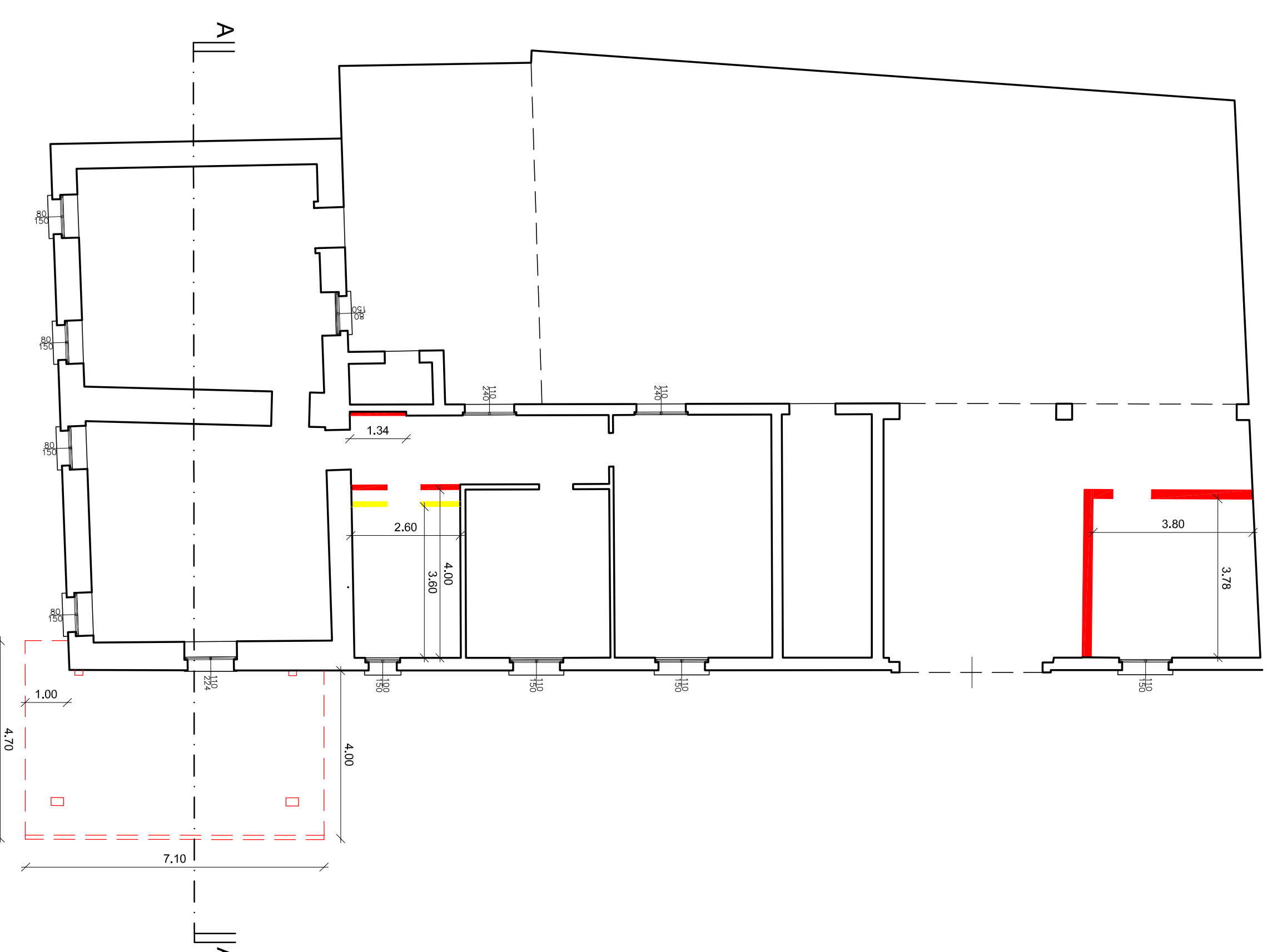


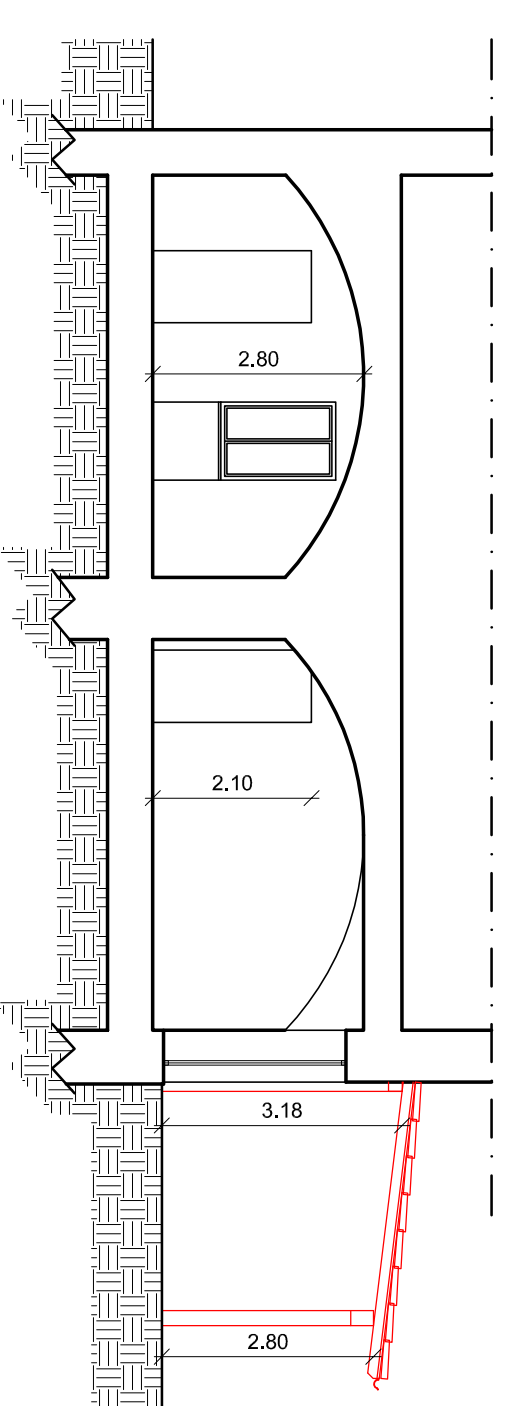
Pianta Stato di Fatto



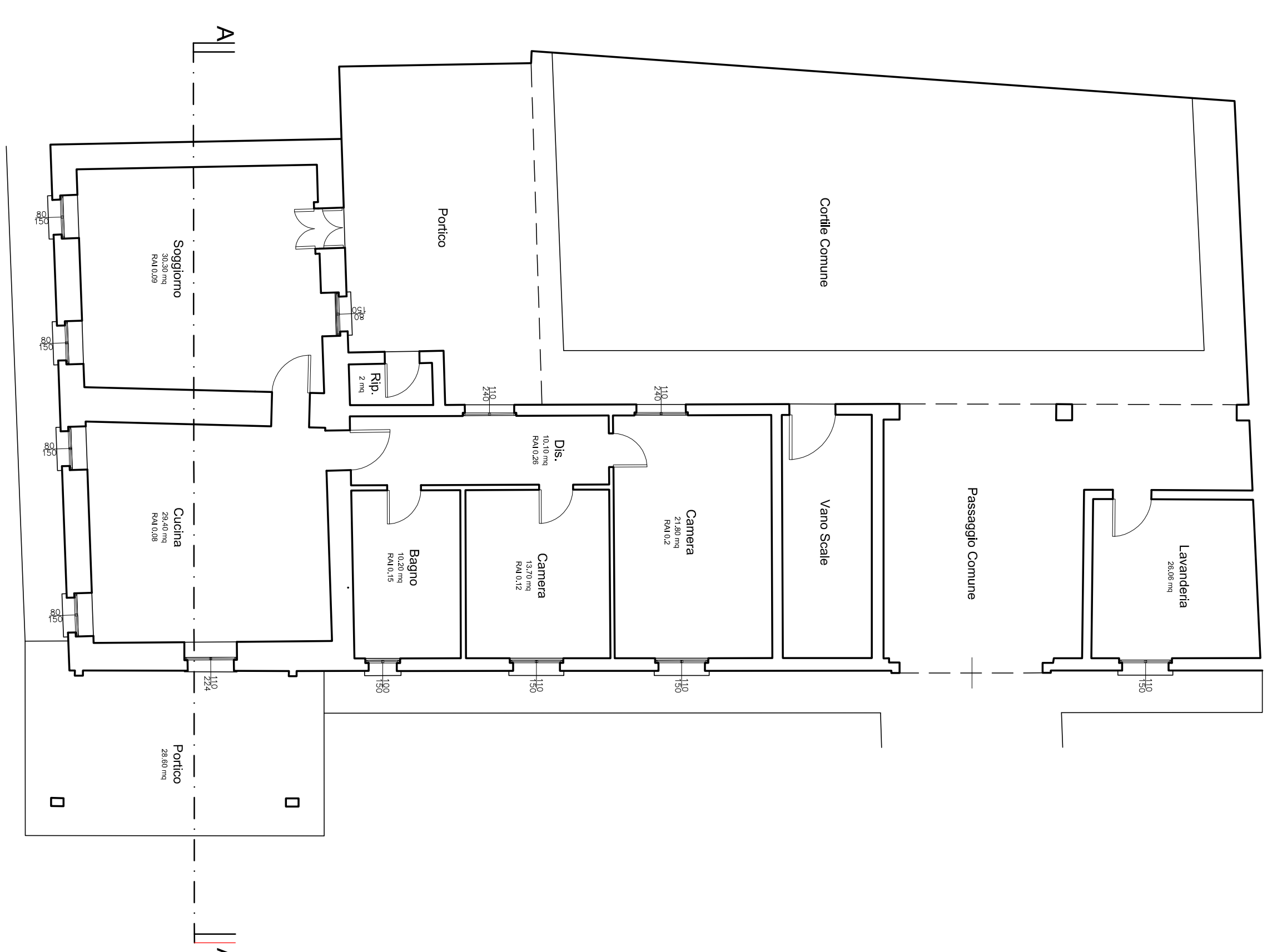
Sezione AA - Longitudinale



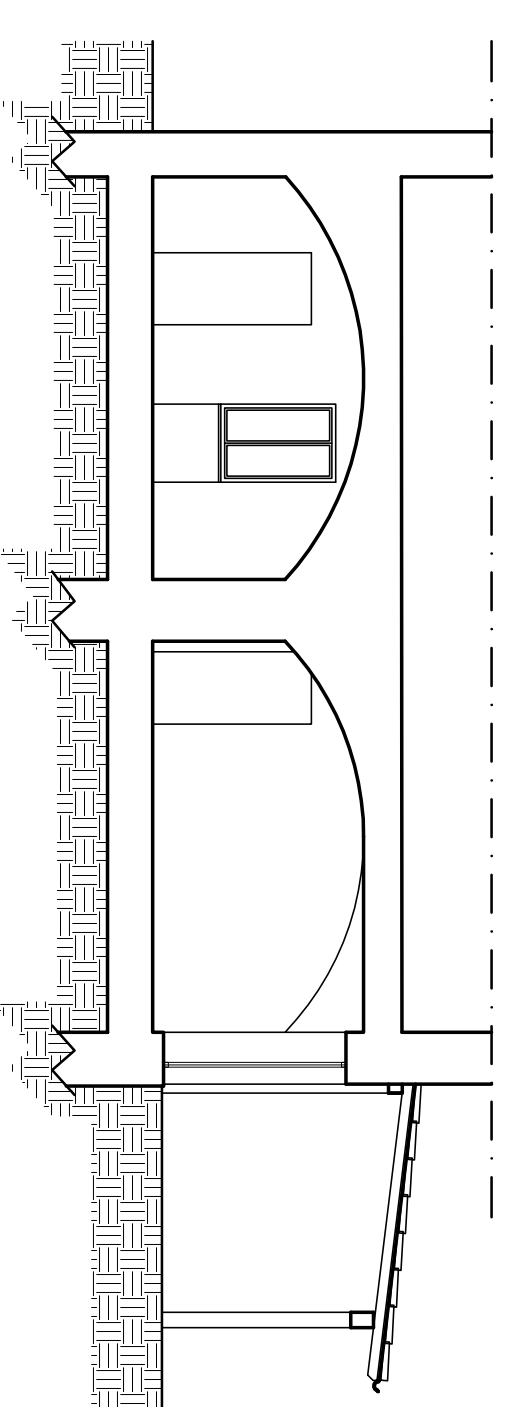
Sovrapposizione



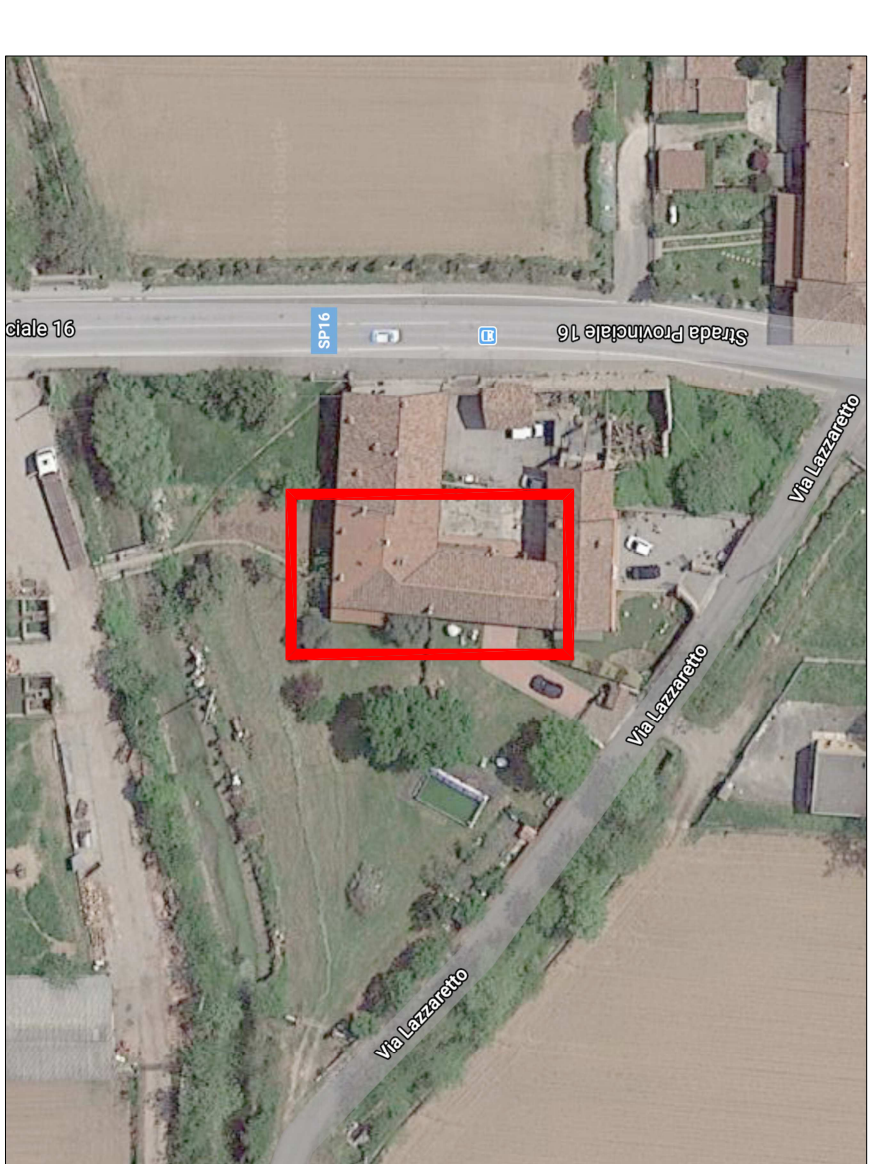
Sezione AA - Longitudinale



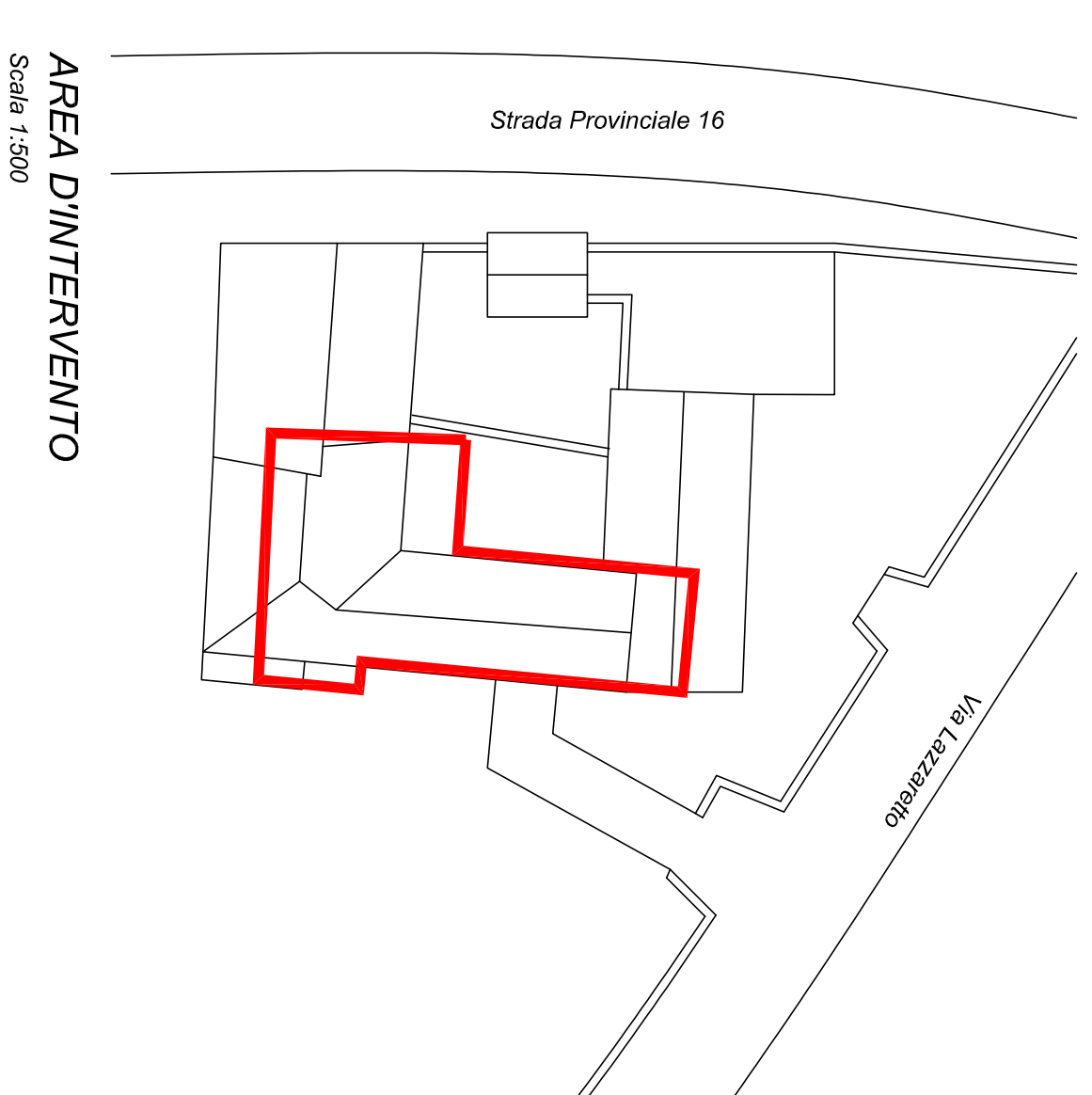
Pianta Progetto



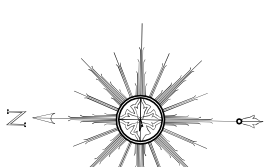
Sezione AA - Longitudinale



INQUADRAMENTO TOPOGRAFICO



AREA D'INTERVENTO



**SMART FLOOR**  
 STUDIO DI ARCHITETTURA  
 VIA GEMELLI, 1/A - 20138 MILANO  
 WWW.SMARTFLOOR.IT

**GEOM. CESARE TRAININI**

**Regolarizzazione di portico ed accessorio**

PIANO DI RECUPERO  
 Immobile in via Lazzarino 18B, Rovato  
 Ditta: PONTILOGIO BRUNO

Data	GEN 2021	Tabella	Objetto
Scala	1:100	<b>U</b>	
Dis.			
<b>MODALITA' DI INTERVENTO</b>			